

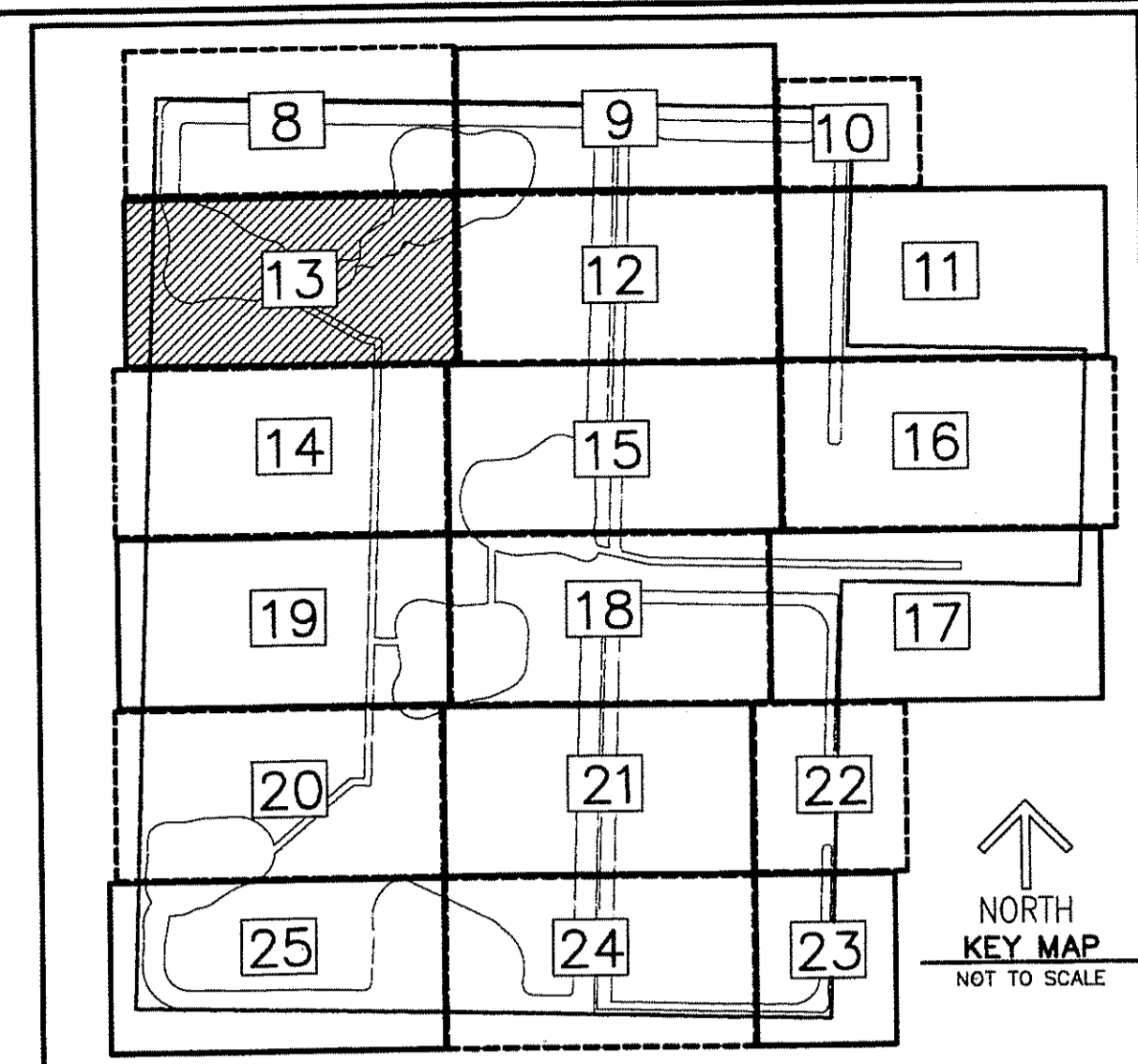
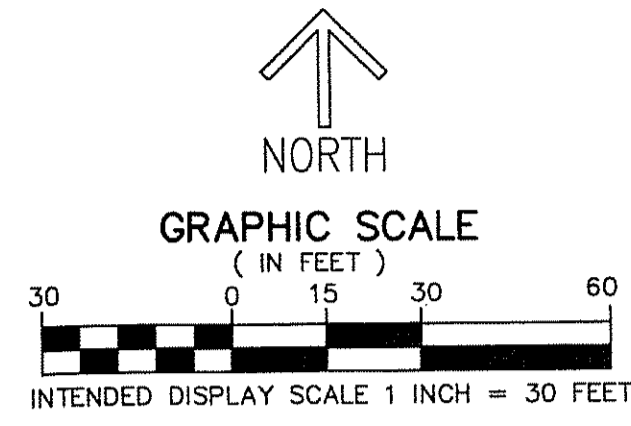
THIS INSTRUMENT PREPARED BY
 DAVID P. LINDLEY
 OF
CAULFIELD and WHEELER, INC.
 SURVEYORS - ENGINEERS - PLANNERS
 7900 GLADES ROAD, SUITE 100
 BOCA RATON, FLORIDA 33434 - (561)392-1991
 CERTIFICATE OF AUTHORIZATION NO. LB 3591

EVERGLADES POLO

A PORTION OF THE SOUTHWEST 1/4 OF SECTION 33, TOWNSHIP 44 SOUTH, RANGE 41 EAST,
 VILLAGE OF WELLINGTON, PALM BEACH COUNTY, FLORIDA

EASEMENT DETAILS

- LEGEND/ABBREVIATIONS**
- AC - ACRES
 - FPL - FLORIDA POWER & LIGHT CO.
 - LB - LICENSED BUSINESS
 - O.R.B. - OFFICIAL RECORD BOOK
 - SF - SQUARE FEET
 - Δ - DENOTES CENTRAL ANGLE
 - R - DENOTES RADIUS
 - L - DENOTES ARC LENGTH
 - PRM - DENOTES PERMANENT REFERENCE MONUMENT
 4" x 4" x 24" CONCRETE MONUMENT WITH ALUMINUM DISK STAMPED "C&W PRM LB3591"
 - - DENOTES PERMANENT REFERENCE MONUMENT
 NAIL AND METAL DISK STAMPED "PRM LB3591"



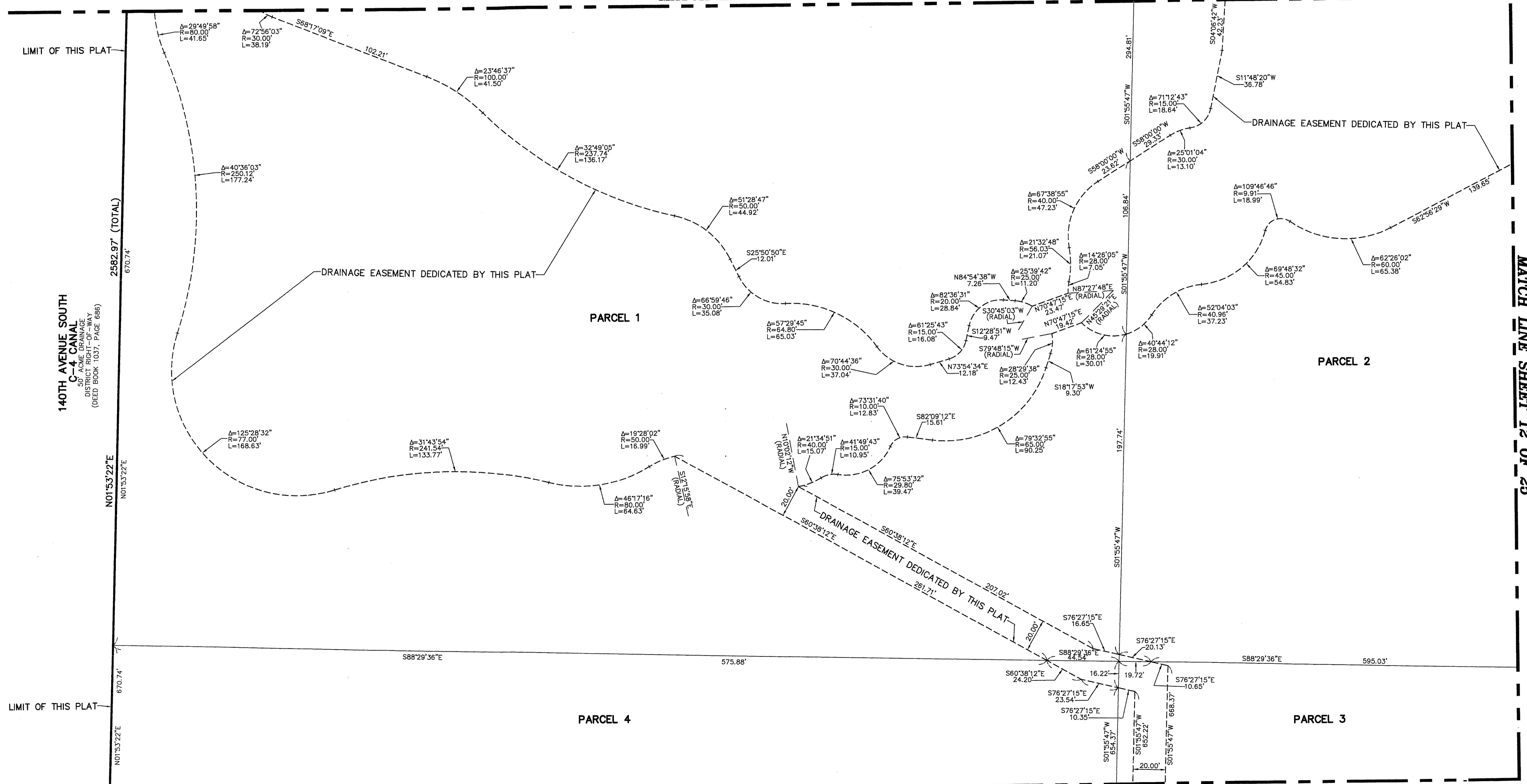
170

STATE OF FLORIDA
 COUNTY OF PALM BEACH
 THIS PLAT WAS FILED FOR
 RECORD AT _____ M.
 THIS _____ DAY OF _____
 A.D. 201____ AND DULY RECORDED
 IN PLAT BOOK _____ ON
 PAGES _____ AND _____
 SHARON R. BOCK
 CLERK AND COMPTROLLER

BY: _____
 DEPUTY CLERK

SHEET 13 OF 25

MATCH LINE SHEET 8 OF 25



MATCH LINE SHEET 14 OF 25

MATCH LINE SHEET 12 OF 25